



Great Monuments of the World

Explore the great wonders of the world using Discovery Education *unitedstreaming* & Google Earth

Social Studies

High School Geography Lesson plan

Standards:

- Students will analyze and adapt an inquiry process (i.e., identify question or problem, locate and evaluate potential resources, gather and synthesize information, create a new product, and evaluate product and process).
- Students will assess the quality of information (e.g.: primary or secondary sources, point of view and embedded values / perspective of the author).

Learning Objectives: The student will be able to,

- demonstrate an understanding of famous cities or landmarks, ancient ruins, or natural wonders found around the world.
- demonstrate an understanding of why people or cultures build landmarks or monuments.
- demonstrate an understanding of national or cultural identity by creating a multimedia presentation that depicts buildings, monuments, natural geography, or statues that represent a city, nation, or location.

Technology components:

- Discovery Education *unitedstreaming* account (<http://www.unitedstreaming.com>*)
- Google Earth software (free download from <http://earth.google.com>)
- Computer with LCD projector and Internet connection
- Access to the Internet for teacher and student based research
- Presentation software such as PowerPoint
- Graphic Organizing software such as Inspiration

Introduction:

- Using Google Earth, create a 'fly-by' of some commonly recognized monuments around the United States, such as the Washington Monument or Seattle Space Needle.



- Visit the SketchUp 3D warehouse and download 3D models of the Space Needle and Washington Monument to insert into Google Earth. (free version of SketchUp available at: <http://sketchup.google.com>)

Prior Knowledge:

- Discuss with the students the Washington Monument, the Lincoln Memorial, or the Vietnam War memorial and why we as a nation build these monuments. Ask the students, “What do these monuments mean to our national and personal identities?”

Present New Content:

- Using Inspiration brainstorm ideas around ‘culture.’ Discuss with the students how they define a culture? What values and beliefs are shared by members of a culture, and how do those beliefs influence individual and group behavior? How are those beliefs represented in the monuments and landmarks they (*the students*) have seen?
 - Suggested *unitedstreaming* content:
 - Video Segments from: How to Study Cultures: How Beliefs and Values Define a Culture
- Use Google Earth to present the globe to the students. Load the worldmonuments.kmz file or search for Washington D.C. in the ‘Fly to’ text box in Google Earth. Using presentation software or Google Earth placemarks, show various *unitedstreaming* video segments or images of great landmarks and monuments around the world.
 - Suggested *unitedstreaming* content:
 - Landmarks of Civilization: Great Wall of China segment
 - City Life in Europe: The building of Paris segment
 - Image: A view of the Eiffel Tower
- As the students watch the various clips and read the articles, have them keep a KWL chart of what they are learning. They should include questions about the culture, why it was built, what parts of the monument they’d like to see more of, the trip itself, logistics, planning, and possible dangers. These questions will become the guide for their independent learning experience.

Independent Learning Experience:

- Students will research locations around the globe and create a travel package to visit three great landmarks around the world, including a marketing video, Google Earth .kmz file, or brochure.
- To advertise their travel packages, the students need to include connections to the impact these places have on their countries/people.





Additional research websites:

- Students can also search for primary source information through a Google Search using the following keywords: “Washington Monument”, “Lincoln Memorial”, or “Big Ben”*

* Review the Google Search tutorial in the Professional Development section of *unitedstreaming*

Cross-Curricular Lesson Extension:

- Students can create a budget for the trip by researching travel expenses such as airline tickets, hotel and lodging, plus costs for food expenses. The teacher can also provide a pre-set budget and have the students calculate how best to spend their money to visit as many places as possible.
- Students can use Google SketchUp to design a new landmark/monument for their school/community to scale.

Feedback:

- Teacher circulates around the room providing ongoing feedback to small groups.
- Students should submit a rough draft of their tour with key ideas behind each location half way through the project. Teacher will provide comments and guidance on next steps for each pair or group.

Assessment:

- Use a scoring rubric, provided to the students in advance, to evaluate each travel log and multimedia presentation.

Transfer:

- Students can explore the idea of cultural icons that are not buildings or places, but people both past and present that impact our society. How do these iconic people influence our daily lives?

Citations:

Physical Science: Structures. Discovery Channel School (2002).

Elementary Video Adventures: Landmarks of Civilization. Discovery Channel School (2001).



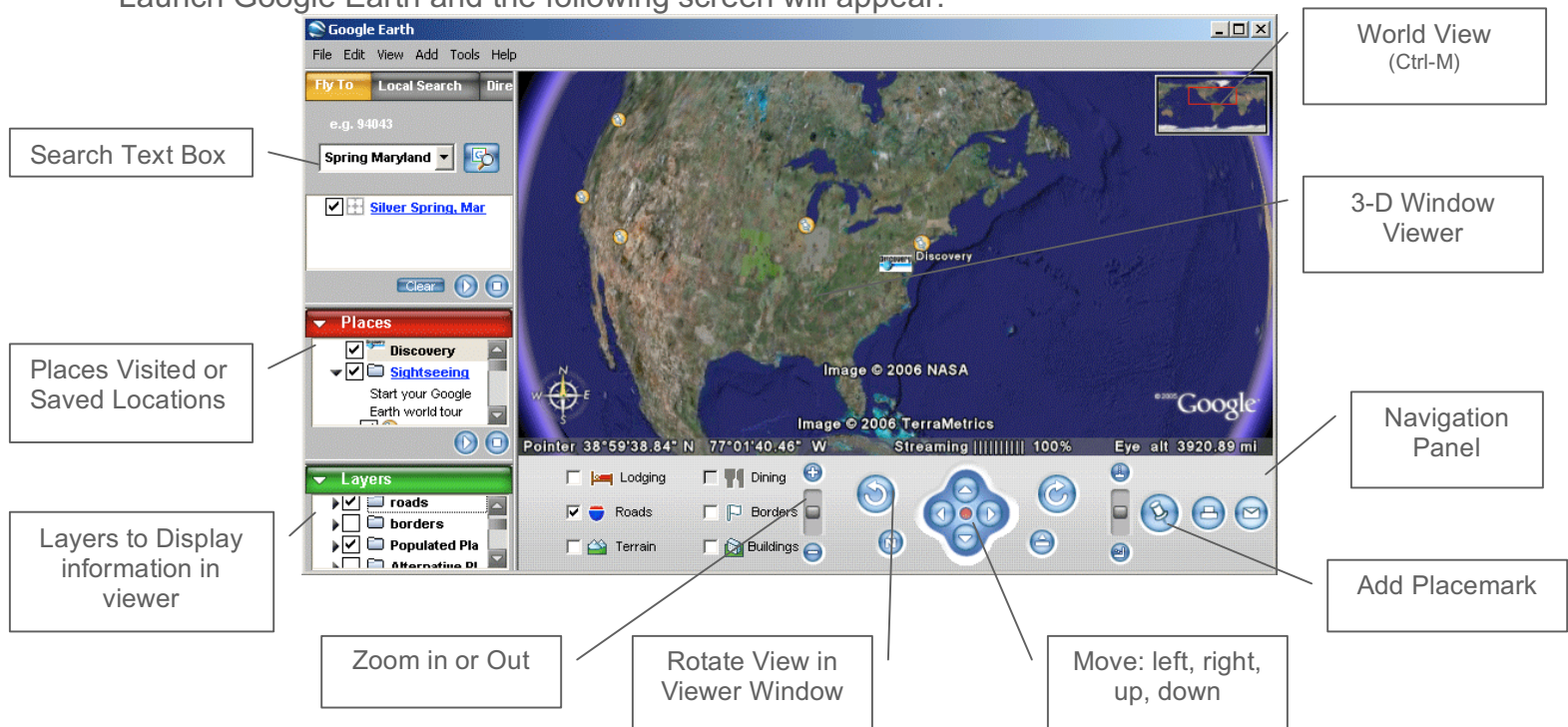


Google Earth

Google Earth allows educators to add elements of satellite photography, world geography, locations, and images to their instructional lessons.

Google Earth Viewer

Launch Google Earth and the following screen will appear:



Fly To a Location

To have Google Earth 'fly-by' a location, type the city, state, or country into the Search Text Box. Google Earth will locate the position and the viewer window will 'fly' to the location.

- Click and hold in the viewer window to move around the location
- Use Google Earth's Zoom, Rotate, and Move tools from the menu bar to navigate and explore the location


World View

Press Ctrl-M to open the world view map in the top right hand corner of the Viewer Window.

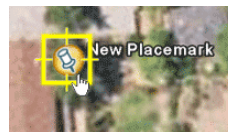
- Double-click on any location in the World Viewer to jump to that location
- Use Google Earth's Zoom, Rotate, and Move tools from the menu bar to navigate and explore the location



Making a Placemark:

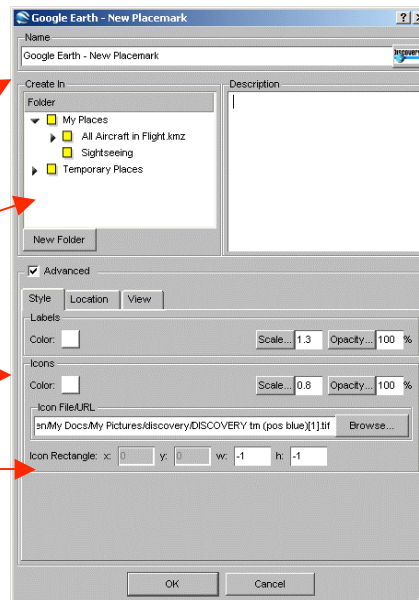
1. Position the viewer in the location where you want to add a Placemark.
2. Click on the 'Add Placemark' pushpin icon  in the navigation panel.
3. The New Placemark dialog appears and a New Placemark icon is centered in the viewer inside a flashing yellow square.

- Position the Placemark by clicking and holding and moving to the exact location you want it.



- In the New Placemark dialogue box, edit the following properties:


- Name for the Placemark
- Destination folder, existing folder or create a new one
- Color of Label or Placemark icon
- Image to represent the Placemark



4. Select a folder to hold the Placemark or create a new one.
5. Click the OK button to apply the information you entered.
6. Once created, editing can be completed by 'right' clicking on the Placemark icon and selecting 'edit...'



Inserting a *unitedstreaming* video segment inside a Placemark:

1. Log into *unitedstreaming* and search or browse the video segment.
2. Right click on the download icon  and select 'copy shortcut'
3. Open up the Placemark by right-clicking on it and click EDIT
4. Paste Shortcut Location inside the Description text box.
Anything that is put inside this box will appear when the Placemark is opened.
5. When visiting the Placemark, double click on the image/icon to open and view images or video segments.

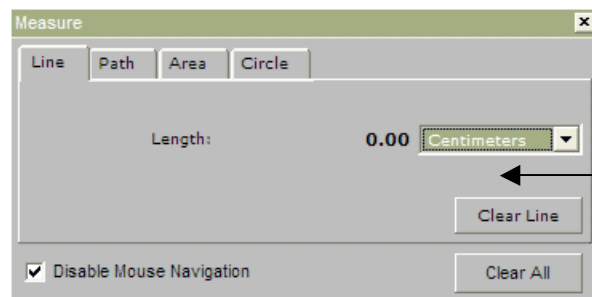
Inserting Funk and Wagnall articles inside a Placemark:

You can copy and paste any of the Funk and Wagnall text found inside *unitedstreaming* that accompanies many of the videos into the Description text box.

Measuring

Use the Measure window in the Tools menu to measure length, area, and circumference as follows:

1. Position the imagery you want to measure within the 3D viewer and make sure you are viewing the earth from top-down (type U) and with terrain turned off for best accuracy.
2. From the Tools menu, select Measure. The Measure dialog box appears.



Consider moving the dialog box to a region of your screen that doesn't obstruct the 3D viewer.

3. Choose the type of shape you want to use to measure:
 - Line allows you to measure from point to point
 - Path allows you to create multiple stops on a journey or trip to measure the total distance



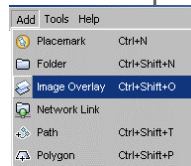
4. Choose the unit of measure for length; perimeter, area, radius, or circumference, as applicable.
5. Click in the 3D viewer to set the beginning point for your shape:
 - For a line: click on the beginning point and the ending point, the distance will appear in the Measure dialogue box.
 - For a Path: click once for the beginning point, indicated by a red dot, click along points of your path and a yellow line connects each point as you move the mouse. Each additional click adds a new line to the path. The total units for the shape are defined in the Measure dialog.
6. Click 'Clear' to reset the measure tool. To close, click on the 'x' on the top right corner of the dialogue box.

Creating an Image Overlay

An image overlay is a picture that you can add over the Google Earth satellite view.

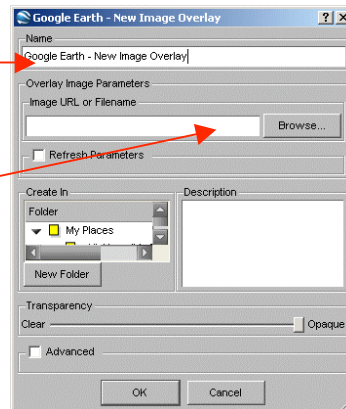
1. Position the viewer in the location where you want to place the overlay image file.

2. Select Image Overlay from the Add menu.



3. The New Image Overlay dialog appears. Edit the following properties:

- Provide a descriptive name in the Name field.
- Browse to locate the icon or image on your computer
- At this point, the image appears in the 3D viewer, with green anchor points. Click and drag these points to position the image.



4. Position the image in the viewer to your preferences and click OK to complete the creation.